

# Quick Start Guide for using the IASI serial Display

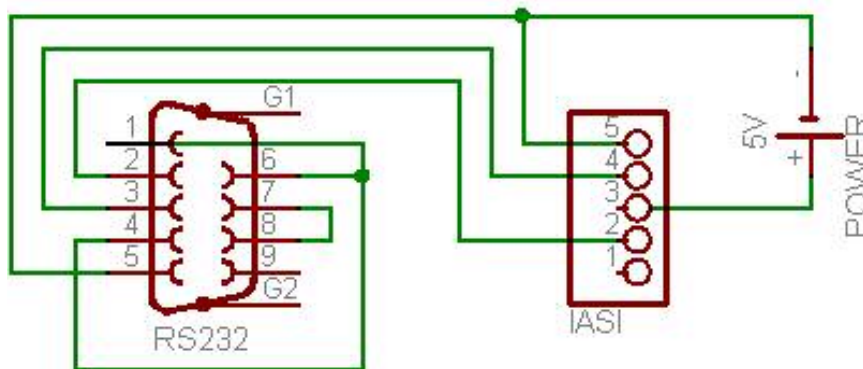


## 1. Connections



**Figure 1 Rear of LCD**

Connect the device to a standard PC 9 Pin COM port, or a USB to serial converter according to the wiring diagram. If there is only one device on the bus (most likely) make sure the jumper is in place.



**Figure 2 Connecting to PC COM Port**

There are only three connections required from the COM port, GND, TX and RX. Handshaking is not required on this device and so this is why pins 1-4-6 and 7-8 are connected together.

The port can be on the PC or it can be a USB to serial adapter, both work equally well.

## 2. Power

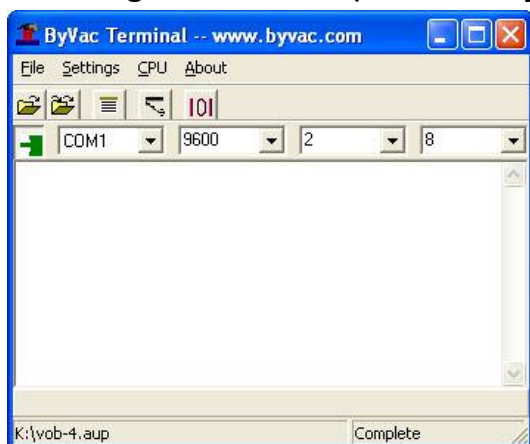
As set at the factory as soon as power is connected a message should be displayed. The device is designed to work with 5V, however the display will work with between 4.5V and 6.8V.

### 3. Terminal Software

Any terminal software (software that is used with the COM ports) can be used for this display, if you have Microsoft Windows then ideally use BV Terminal. This can be obtained free form [www.byvac.co.uk](http://www.byvac.co.uk). This is only one file, simply drop the exe file into a suitable directory and launch, there is no installation or set up. The file will write a configuration file to the directory to keep track of the settings, but that's all.

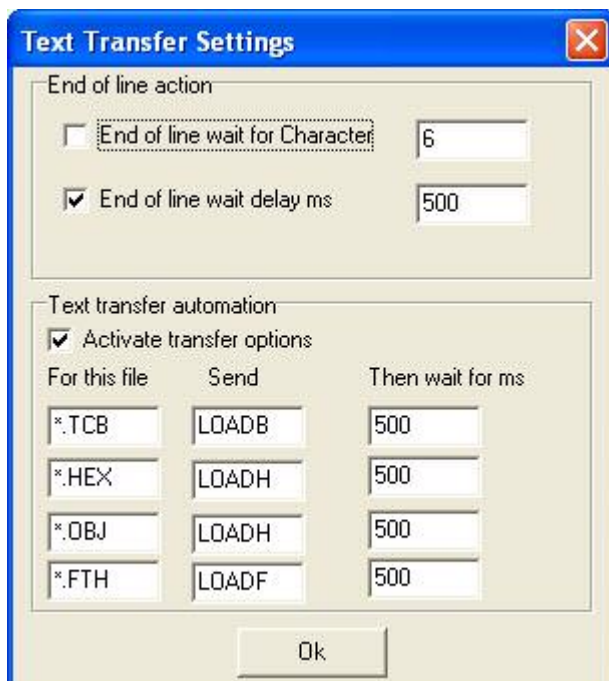
The next section instructions are for BV Terminal, see later for setting up HyperTerminal.

### 4. Using BV Terminal (see 8 for HyperTerminal)



**Figure 3 BV Terminal Software**

Launch BV Terminal and pick settings>Text Transfer from the menus and copy the following settings:



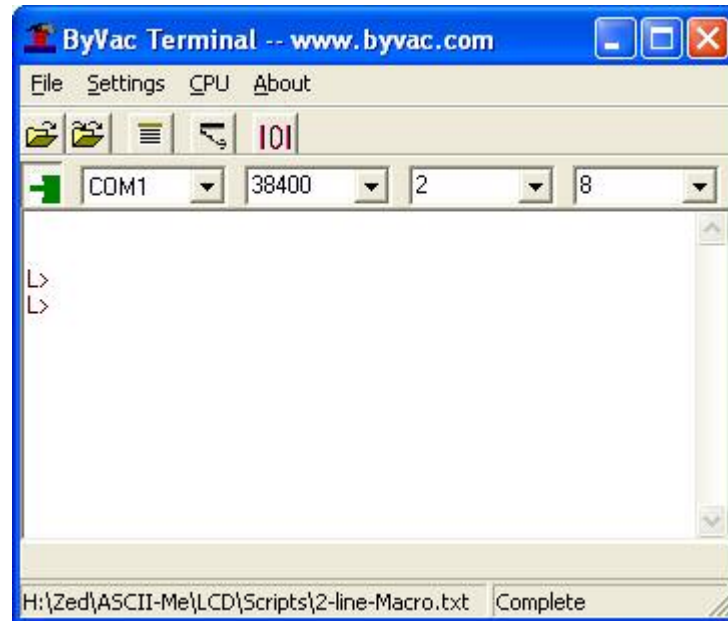
**Figure 4 BV Terminal Settings**

Dismiss the dialogue and set the drop down boxes to match those in Figure 3. Of course it may not be COM 1 on your system.

## 5. Establishing Communication

Press the small red icon to the left of the BV Terminal window and this should turn green to show that a connection to the selected COM port has been made. If you get an error at this stage then you have selected the wrong COM port or you do not have a COM port on your system.

When the icon is green press <enter> a couple of times until a **L>** prompt is seen, this process establishes the baud rate.



**Figure 5 Establishing the Baud Rate**

As can be seen from Figure 5 the Baud Rate will be established so setting the actual baud rate on the terminal is not that important.

## 6. A few Simple Commands

Try some simple commands to become familiar with the interface, for example:

**za**

The above will return the current address, this will be 00 by default, try changing it to say D1 by:

**zaD1**

Try **zv**, this will print the version details. Once communication has been established try some simple commands:

**dh** will clear the display

**bt "fred"** will write to the display

**bp40** will move the cursor to line 2

## 7. Extended mode

Just as a quick taster of the power of the interface do the following:

**ex**

**wd1 L 0 39**

**wt1 "This text will scroll from the right"**

**wa1 -c**

The above will scroll the text from the right to the left and off of the screen on line 1. You can speed the scroll up by entering the following:

**ws6**

To reset the display type **zr** and <enter> a couple of times.

## 8. Using HyperTerminal

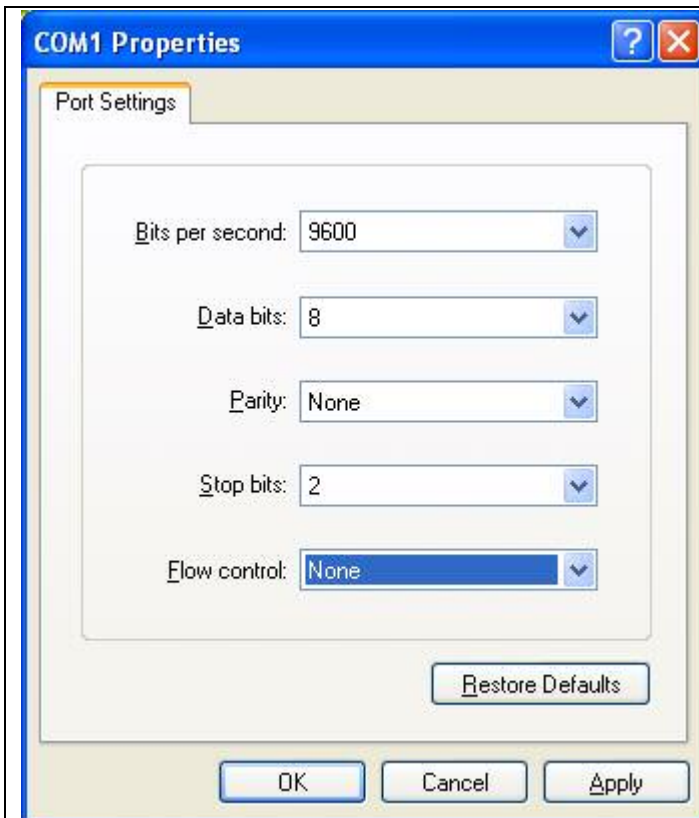
If you have a Microsoft system then HyperTerminal is built in, this can be used to communicate with the IASI Display. Launch and follow the steps below.



**Figure 6 Enter any name**

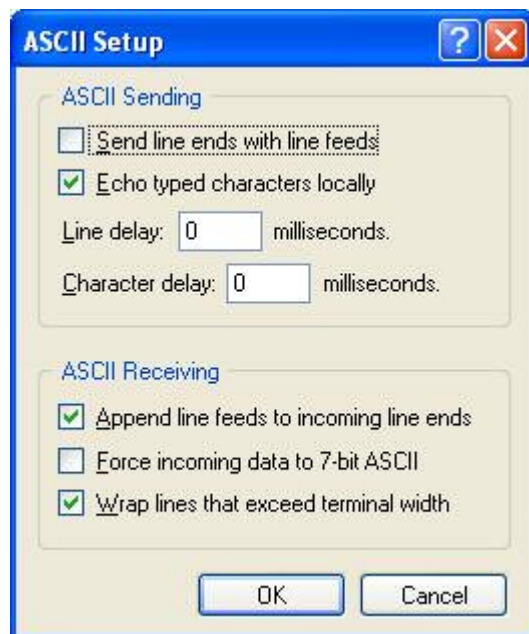


**Figure 7 Chose a suitable COM Port**



**Figure 8 Port Settings**

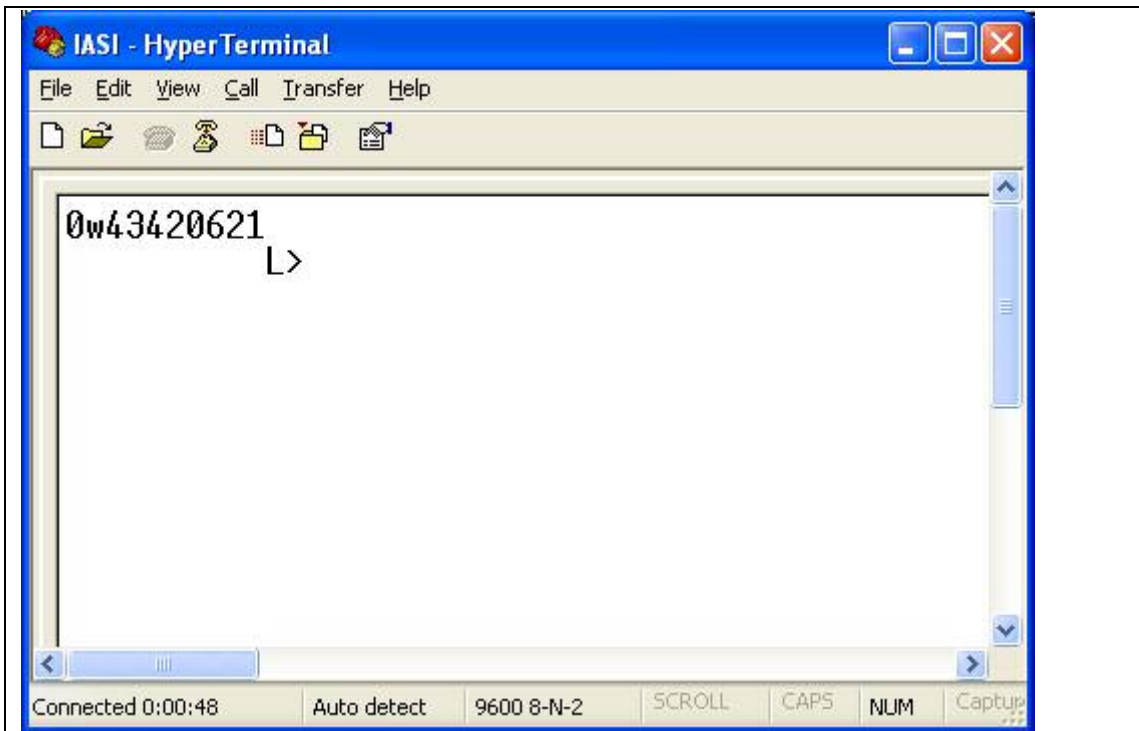
NOTE that flow control should be set to **None**.



**Figure 9 ASCII setup**

The dialogue in Figure 9 is under the File menu, Properties, Settings tab and the ASCII setup button.

Switch on the display and establish a Baud rate, you will just get the L>, but there will be no line feed. This does not effect the operation of the display.

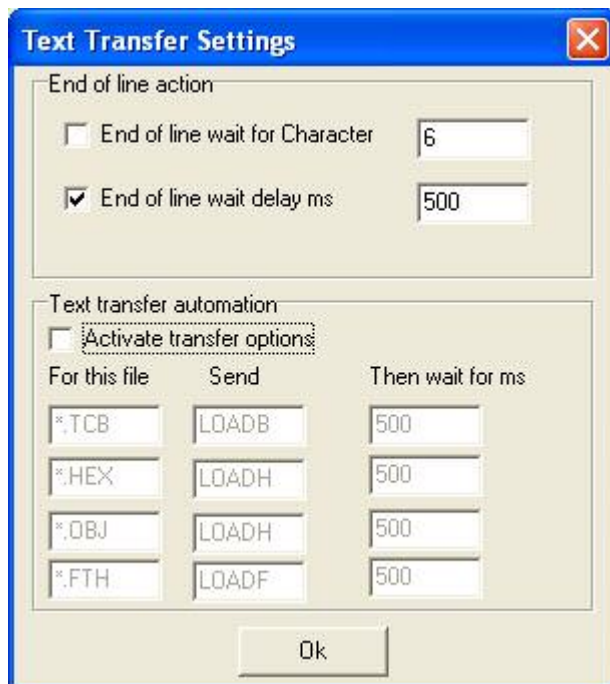


**Figure 10 Connection with HyperTerminal**

HyperTerminal gives a slightly odd display but works just as well.

## 9. Scripts

Contained on the CD-ROM are two scripts. These can be used with BV Terminal with the following settings:



The ½ second delay at the end of each line gives enough time for the display to accept the command. To use, simply connect the display and use 'File>Send text file' (or the icon). The display will then run through the commands.

To use the macro script, type **ZM** first on the display and then when the script has finished running press escape. You can then test the macro with **ZT**.